

web: <http://covidcirrhosis.org>
email: covid.cirrhosis@unc.edu
twitter: @SecureCirrhosis

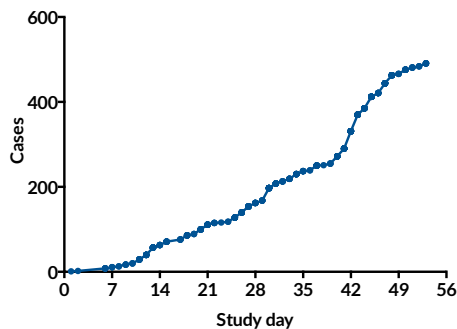
web: <https://covid-hep.net>
email: info@covid-hep.net
twitter: @COVIDHep

Combined weekly update – 12 May 2020

We continue to wish everyone working to fight COVID-19 well and we welcome you to this combined update from our two collaborating international registries: **SECURE-Cirrhosis** covering North and South America, China/Japan/Korea and **The EASL supported COVID-Hep registry** covering the rest of the world in an attempt to collate clinical details of patients with chronic liver disease who develop COVID-19.

Total cohort (n = 491)

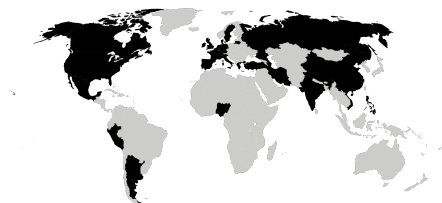
Submissions over time



Characteristics

442 (90%) hospitalised
320 (65%) men
Median age 59 years (IQR 47-68)

Submissions from 28 countries



Chronic liver disease, non-cirrhotic (n = 197)

Major outcomes

Intensive care admission	34	17%
Invasive ventilation	32	16%
Death	13	7%

Cirrhosis (n = 209)

Major aetiologies

Alcohol	63	30%
Non-alcoholic steatohepatitis	37	18%
Hepatitis C	24	11%
Hepatitis B	19	9%
Haemochromatosis	17	8%
Autoimmune hepatitis	10	5%
Alcohol & HCV	10	5%
Others and mixed	29	14%

Decompensation

Any	83	40%
New or worse ascites	50	24%
New or worse encephalopathy	47	22%
Variceal haemorrhage	5	2%

Major outcomes

Intensive care admission	52	25%
Invasive ventilation	35	17%
Death	76	36%

Liver transplant (n = 85)

Major outcomes

Intensive care admission	19	22%
Invasive ventilation	15	18%
Death	17	20%

We look forward to providing more updates in future and thank all our contributors so far.