

**web:** <https://covidcirrhosis.web.unc.edu/>  
**email:** [covid.cirrhosis@unc.edu](mailto:covid.cirrhosis@unc.edu)  
**twitter:** @SecureCirrhosis

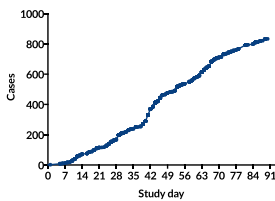
**web:** <https://covid-hep.net>  
**email:** [info@covid-hep.net](mailto:info@covid-hep.net)  
**twitter:** @COVIDHep

## Combined weekly update – 19 June 2020

We welcome you to this combined update from our two collaborating international registries: **SECURE-Cirrhosis** and **EASL supported COVID-Hep** collating clinical details of patients with chronic liver disease who develop COVID-19. *Please note that our registries contain predominantly hospitalised patients and are subject to reporting biases.*

### Total cohort (n = 833)

#### Submissions from 31 countries over 12 weeks



#### Characteristics

735 (88%) hospitalised  
526 (63%) men  
Median age 59 years (IQR 48-67)  
188 (23%) taking immunosuppressant drugs

#### Output

Chronic liver disease, JHep: [bit.ly/3bYxUy6](https://bit.ly/3bYxUy6)  
Liver transplant, Lancet G&H: [bit.ly/2Xmng01](https://bit.ly/2Xmng01)  
Webinar, 17:00 CET 4th June: [bit.ly/2ZXhnli](https://bit.ly/2ZXhnli)

### Chronic liver disease, non-cirrhotic (n = 303)

#### Major outcomes

Hospitalised	267	88%
Intensive care admission	61	20%
Invasive ventilation	55	18%
Death	25	8%

### Cirrhosis (n = 379)

#### Major aetiologies

Alcohol	118	32%
Non-alcoholic steatohepatitis	75	20%
Hepatitis C	42	11%
Hepatitis B	25	7%
Autoimmune hepatitis	23	6%
Alcohol & HCV	20	5%
Alcohol & NASH	12	3%

#### Decompensation

Any	172	45%
New or worse ascites	104	27%
New or worse encephalopathy	99	26%
Variceal haemorrhage	14	4%

#### Major outcomes

Hospitalised	345	91%
Intensive care admission	105	28%
Invasive ventilation	70	19%
Death	125	33%

### Liver transplant (n = 151)

#### Major outcomes

Hospitalised	123	81%
Intensive care admission	45	30%
Invasive ventilation	29	19%
Death	29	19%

We look forward to providing more updates in future and soon hope to publish more definitive analyses of both our transplant and chronic liver disease cohorts. We would like to thank all contributors to both registries.